

Nepal News

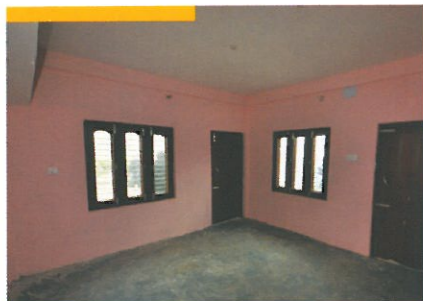
The March-April 2014 Nepal Trek was again facilitated by Dr Sally Nobbs and was well attended by members of the wider School community.

Wilderness Bhadure Boarding School

This is the most recent project at the Bhadure School supported by the Wilderness School Community. During our visit this year, we inspected the boarding house and undertook interviews for boarding scholarships. While the facilities are particularly basic, the 3 main rooms, bathroom and kitchen are more than modest compared with the typical Nepalese village home. Following these interviews, eleven girls aged 6-13 years were awarded scholarships valued at \$500 a year. When asked about living away from her family, ten-year old Anju summed it up saying, "I must lose something to gain something".



Bhadure Boarding House



One of 3 rooms of the Bhadure Boarding House

...ten-year old Anju summed it up saying, "I must lose something to gain something".

Bhadure School Scholarship for Girls

The group also met with Year 9 students who are hoping to be sponsored to complete their final school years in Bhadure. A scholarship to complete Years 10-12 costs \$100/year, while it is \$200/year for university. If you wish to sponsor a girl for Bhadure to enable her to complete her schooling or attend university, please contact Sally Nobbs at snobbs@wilderness.com.au



The 11 Bhadure School Boarder Scholarship students



Bhadure School

Nepal News

Junbesi Health Camp

An Australian medical team, comprising a general practitioner, geriatrician, radiologist, orthopaedic surgeon, dentist, physiotherapist, two pharmacists, two nurses and a handful of non-medically trained but, nonetheless, very helpful assistants, participated in the 2014 Junbesi Health Camp.

The team was complemented by a Nepalese contingent of doctors, nurses, laboratory technicians and interpreters, including Ang Sherpa, the founding father of the Kushudebu Public Health Mission.

Over the course of 3 days, this team saw 350 patients of all ages, supplied 1000 courses of medication and were able to run simple blood tests, utilise the basic X-ray and ultrasound scanning equipment and perform basic dental procedures.

As always, the patients and local Junbesi community are exceptionally grateful for the ongoing financial and practical support provided by the girls at Wilderness School and the wider Wilderness community.



Dentist Dr Will King with assistants Katy Nicholls and Fiona Paton

Incinerator for Thuptenghholing Monastery

Following the health camp, a visit was paid to Thuptenghholing Monastery, where an incinerator was donated in memory of Dr Henry and Mrs Nan Rischbieth, long term supporters of Wilderness School and members of the Penneshaw community, KI.

The gift was made possible by their loving children and grandchildren in an effort to reduce rubbish in the community and, as a result, prevent disease.



Geoff, Margot and Sue at the Incinerator

Acknowledgements

To Sally Nobbs for her selfless dedication to the Wilderness School projects in Nepal, ensuring their sustainability and expansion in education and health.

To the members of the Tea Tree Gully Golf Club, who knitted more than 200 beanies.

To all those who donated clothes and medical supplies.

To the team in Nepal, particularly Ang, Prasant, Richie and the sherpas and porters who worked tirelessly.

To the St Peter's Old Collegians' Hockey Club for their donation of 25 hockey sticks to Bhadure School

Fiona Paton
Old Scholar and regular Nepal visitor